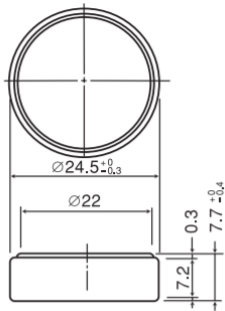




Dimensions



* Panasonic offers batteries with tabs or lead wires.

Features & Benefits

- Offers high-rate pulse discharge
- Available in a range of compact sizes and capacities, from thin-type to high-capacity models
- Excellent low-temperature performance enhanced by manganese-dioxide positive pole

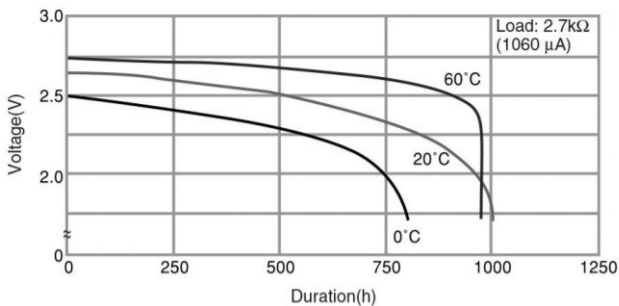
Specifications

Part number		CR2477
Nominal voltage		3V
Nominal capacity		1000mAh
Continuous drain		0.2mA
Dimensions* ¹	Diameter(Max.)	24.5mm
	Height(Max.)	7.7mm
Weight* ¹		Approx. 10.5g
Operating temperature* ²		-30°C to +85°C

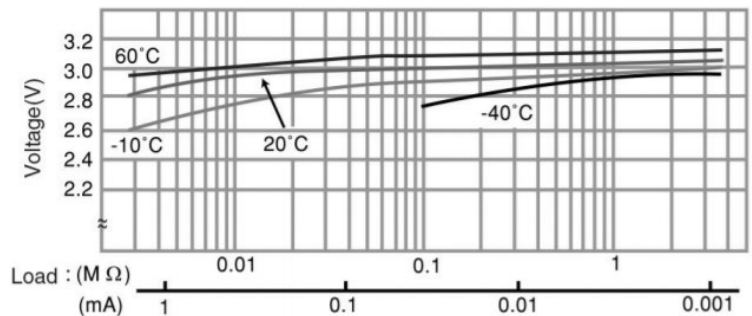
*¹ Without tabs.

*² Please consult Panasonic when anticipating usage in operating temperatures of 70°C or above.

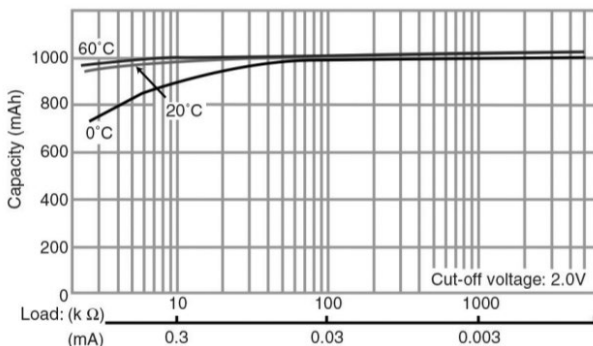
Discharge temperature characteristics



Operating voltage vs. load resistance (voltage at 50% discharge depth)



Capacity vs. load resistance



Applications

Remote keyless entry, Card remote controls, memory backup, security price tags, smart transmitter tags and others.

This data in this document is for descriptive purposes only and is not intended to make or imply any guarantee or warranty. As of March, 2021. The contents of this product information are subject to change without notice.

Please visit our website at:
Panasonic Corporation

<https://eu.industrial.panasonic.com/products/batteries-energy-products/primary-batteries/lithium-batteries>

