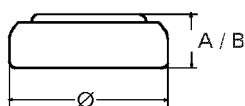


Data Sheet

Type Number 20371
Designation IEC SR69
System Silver oxide / Zinc /
 NaOH - Electrolyte



Nominal Voltage..... 1,55 V
 Capacity 30 mAh
 (33 kOhm continuous load at 20°C down
 to 1,2 Volts)

Weight..... 0,57 g
 Volume..... 0,14 ccm
 Coding..... Date of Manufacturing
 Month/Year

Dimensions	min.	max.
Diameter (Ø)	9,25 mm	9,5 mm
Height (A/B)	1,85 mm	2,1 mm

Operating Temperature..... 0°C - 60°C
 (60°C only 40 days)
 Self Discharge..... Less than 10%
 per year at 20°C

Segment..... Watch

Main Applications..... Watch
 Photo
 Electronic

Typical Discharge Capacities (at 20°C)

Discharge Type	Load	End Voltage:	1,2 Volts
Continuous 24h/d,7d/w	33000 Ω	Time:	710 hours
		Capacity:	30 mAh
		Energy :	43 mWh

