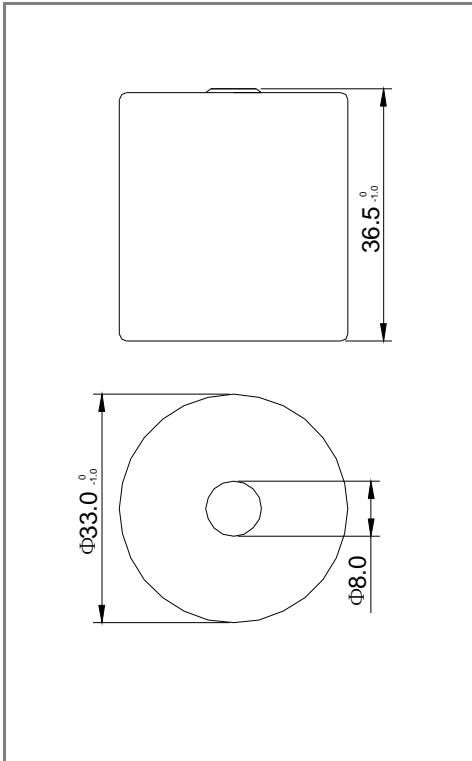
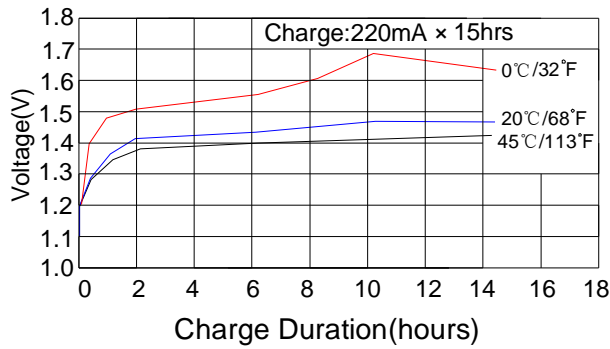


## D-1/2D2200 Specifications

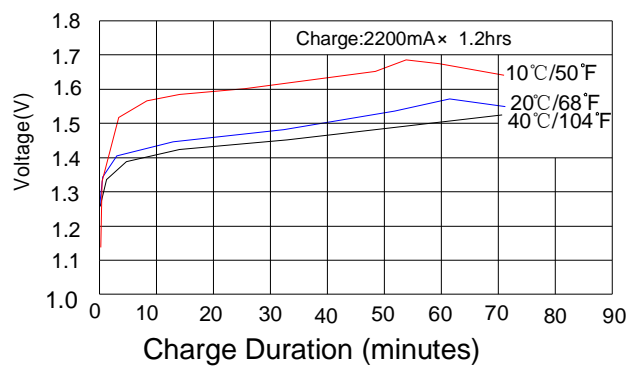


<b>Nominal Capacity</b>	<b>2200mAh</b>
<b>Nominal Voltage</b>	<b>1.2V</b>
<b>Internal Impedance (at 1000Hz)</b>	<b>&lt;10mΩ</b>
<b>Charge</b>	
<b>Standard Charge</b>	<b>220mA x 15h</b>
<b>Rapid Charge</b>	<b>2200mA x 1.2h</b>
<b>Discharge Cut-off Voltage</b>	<b>1.0V</b>
<b>Max Dimension (with tube)</b>	
<b>Diameter</b>	<b>33.0mm</b>
<b>Height</b>	<b>36.5mm</b>
<b>Weight</b>	<b>75 g</b>
<b>Operating Temperature</b>	
<b>Charge</b>	<b>0 ~ 45°C</b>
<b>Discharge</b>	<b>-20 ~ 60°C</b>
<b>Storage Temperature</b>	
<b>Within 1 month</b>	<b>-5 ~ 35°C</b>
<b>Within 6 months</b>	<b>0 ~ 35°C</b>

**Standard charge characteristics**



**Rapid charge characteristics**



**Discharge characteristics**

