



# PowerBrick +

## 48v Lithium-Ion battery pack



### 48V battery pack - Lithium Iron-Phosphate (LiFePO<sub>4</sub>) - 72Ah

- **High Service Life : 3000 cycles** and more (see chart)
- **Deep discharge** allowed up to 100 %
- Ultra safe **Lithium Iron Phosphate** chemistry (no thermal run-away, no fire or explosion risks)
- **Embedded BMS** (Battery Management System) : **improve lifespan AND secure the battery**
- No **Lead**, no **rare earths**, no **acid**, no **degassing**
- Calendar life > **10 years**
- Excellent **temperature** robustness (-20 °C up to +60 °C)
- **Flexible** deployment : up to 10 packs in parallel and 4 in serial
- **Constant power** during discharge (very low internal resistance)
- **Very low Peukert's losses** (energy efficiency of 98 %)
- **Very low self discharge** (<3 % per month)
- **No memory effect**
- About **50 % lighter** and **40% smaller** than equivalent Lead-AGM battery with same usable energy
- **Certification : CE, RoHS, UN 38.3**

### Technical Specifications

Electric	Nominal voltage	51.2 V
	Nominal capacity	72 Ah
	Stored energy	3.69 kWh
	Internal resistance	≤ 50 mΩ
	Cycles	>3000 cycles (see chart)
	Self discharge	< 3% per month
	Energy efficiency	98 %
Standard Charge	Charge voltage	56.0 V ± 0.2V
	Charge mode	CC/CV : Constant Current / Constant Voltage
	Continuous charge current / Maximum charge current	35 A / 70 A
	BMS charge cut-off voltage	57.0 V ± 0.8V
Standard Discharge	Continuous discharge current	90 A (4.61 kW)
	Maximum discharge current (< 30s)	130 A (6.57 kW)
	BMS discharge cut-off voltage	40V
Environment	Charge temperature range	0°C to +50°C
	Discharge temperature range	-20°C to +60°C
	Storage temperature	0°C to +50°C @60±25% relative humidity
	IP protection level	IP 66
Mechanical	Cell assembly	26650 - 16S19P
	Casing material	ABS
	Dimensions	L : 500mm (520mm) x P : 239mm x H : 217 mm
	Weight	31.2 kg
	Terminal	M8



### APPLICATIONS

- **Electrical vehicles and utilities**
- **Solar and wind energy storage**
- **Marine**
- **Street lightning**
- **CCTV and security camera**
- **UPS, electric back-up**
- **Telecom**
- **Medical equipments**
- ...



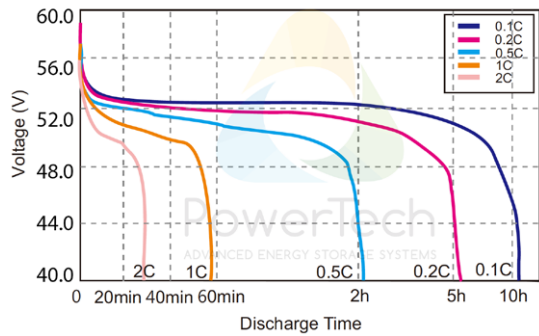
# PowerBrick+

48v Lithium-Ion battery pack

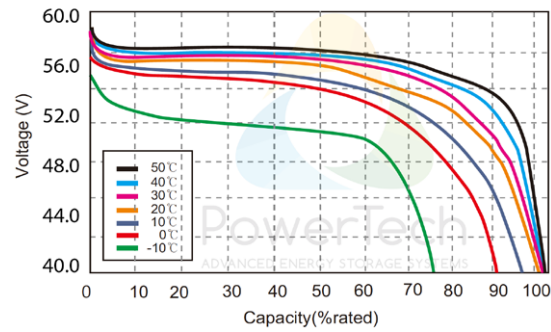


## Charts and curves

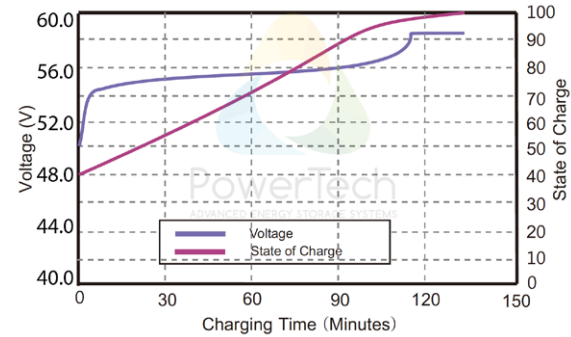
Different Rate Discharge Curve @25°C



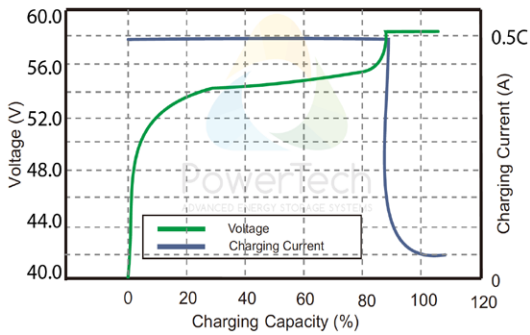
Different Temperature Discharge Curve @0.5C



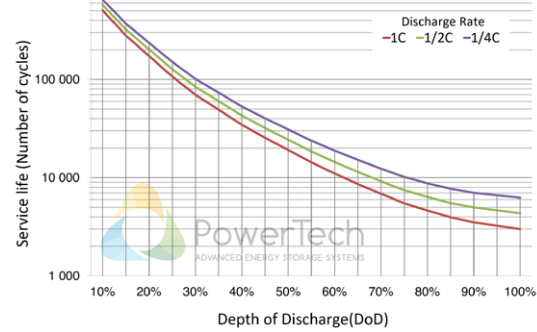
State of Charge Curve @0.5C 25°C



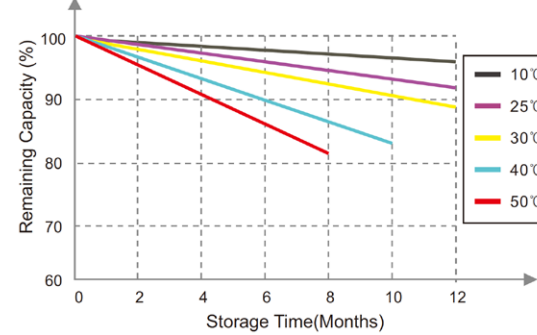
Charging Characteristics @0.5C 25°C



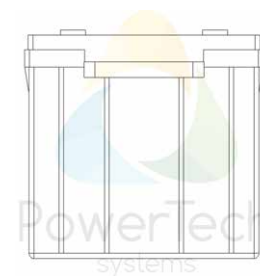
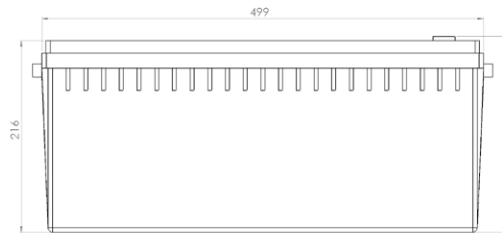
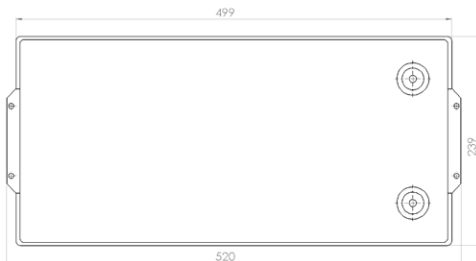
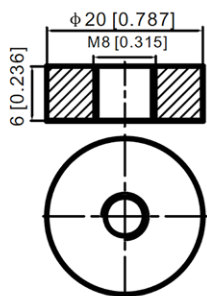
Number of cycles vs. Depth of discharge (DoD)



Different Temperature Self Discharge Curve



## Dimensions



V1.1

PowerTech Systems SAS  
Technoparc - Espace Cristal  
22 Rue Gustave Eiffel  
78300 POISSY - France

SAS au capital de 400 000 Euros  
SIREN : 793926577 - TVA : FR33793926577

[www.powertechsystems.eu](http://www.powertechsystems.eu)  
+33 185 400 970  
[contact@powertechsystems.eu](mailto:contact@powertechsystems.eu)